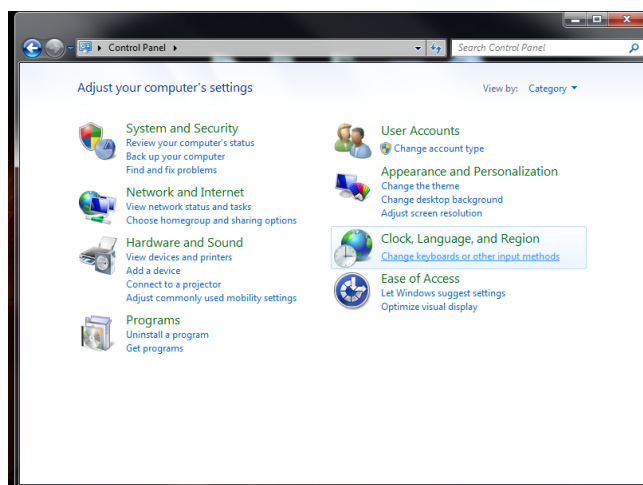


Putting macrons on Māori words

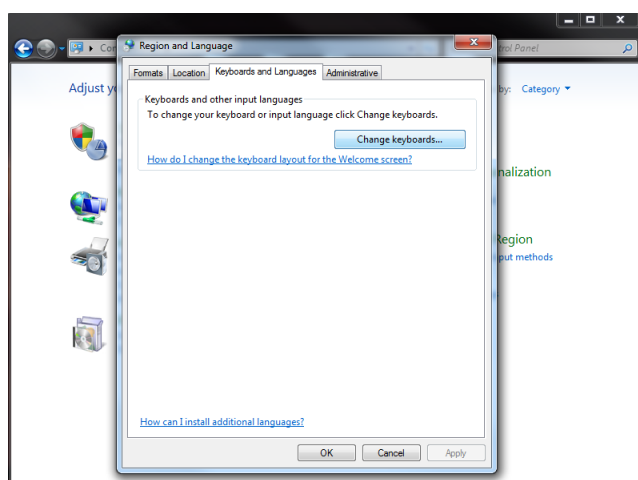
A macron is a line above a vowel to indicate that it should be spoken as a long vowel: ā, ē, ī, ō, ū, Ā, Ē, Ī, Ō and Ū. The Māori word for macron is tohutō (or pōtae - hat).

On Windows 7 and above, the Māori keyboard driver is already installed. You just have to activate it as follows:

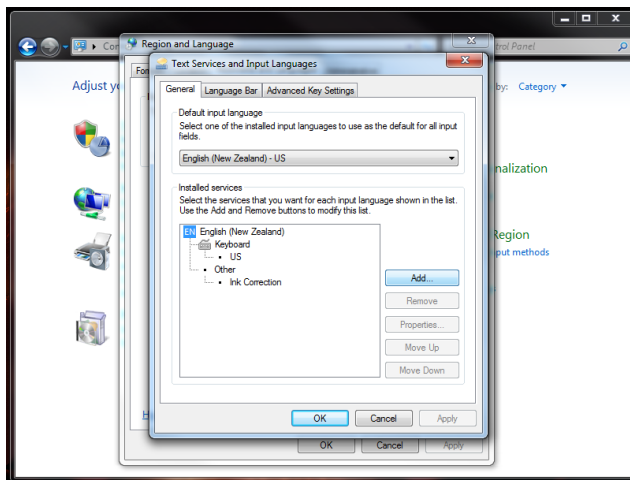
1. Start Control Panel.
2. Click Clock, Language and Region heading



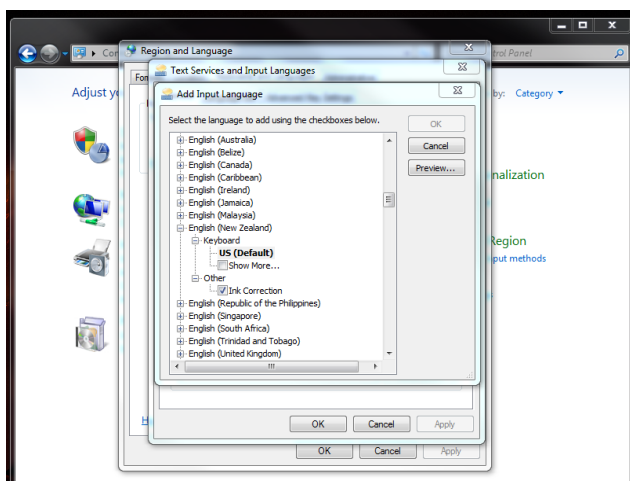
3. Click Change keyboard or other input methods (under Region and Language)



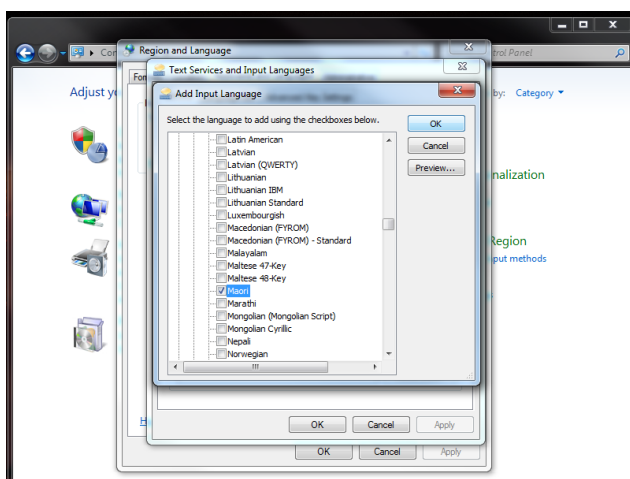
4. If it already says English (New Zealand) - Maori, then it's already set up. Don't continue! Otherwise, click Add.



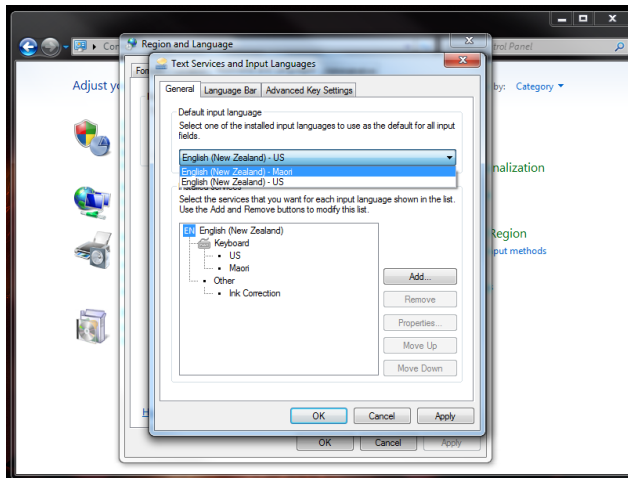
5. Scroll down to English (New Zealand), expand Keyboard, click Show More.



6. Find Maori in the list and tick it, then click OK.



7. Change the Default input language to English (New Zealand) - Maori. Click Apply.



Now you can easily enter a macronised vowel by pressing ` (the key with ~ on it which is left of the 1) and then the vowel.



NB: you may need to restart your computer before this will take effect.

To enter a macronised capital vowel, press `, then hold down shift and press the vowel.

Find out more from the website <https://kupu.maori.nz/about/macrons-keyboard-setup>.